



M.10

Home Collection

Welcome to the Melbourne Collection by Boutique Homes – a distinctive series of designs for inner-urban living.

The M.10 series includes the Barkly and Saxon, both designed to fit a 10m-wide lot. You'll be thrilled by how many lavish, modern appointments each home packs into its compact floorplan.

Tidy your coats and shoes away in the entry hall cloakroom, then relax in the open-plan living area – a stunning, light-filled space that connects the gourmet kitchen, casual dining, peaceful lounge and integrated outdoor living

area. Generous storage space, including walk-in pantry, keep the home tidy, and a dedicated e-zone enables supervised study or easy work from home.

Upstairs, a central family retreat divides the main bathroom, study nook and three minor bedrooms from the front-facing master suite, which boasts twin walk-in robes and a luxuriously spacious ensuite with oversized shower and double vanity.

M.10 Facade options available



Modern



Lonsdale



Contempo



Vaucluse

Barkly

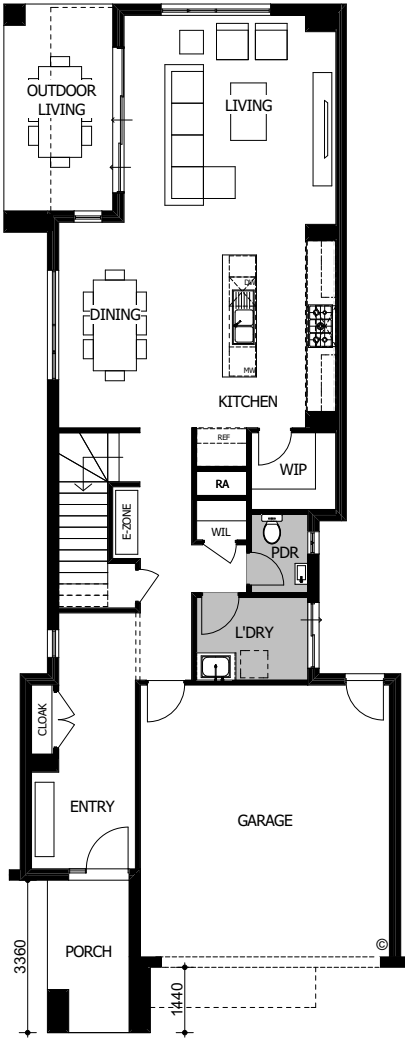


Fits lot width 10m

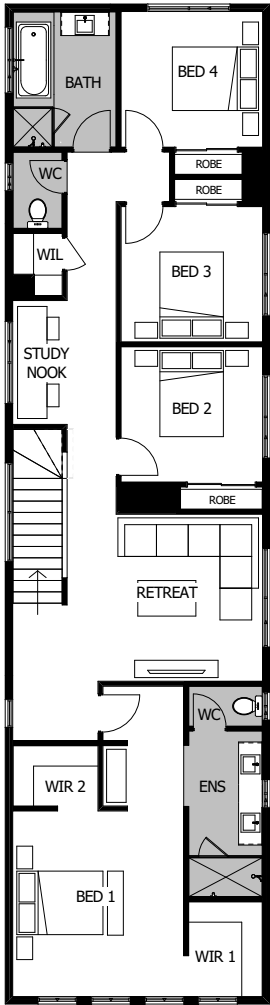
Specifications	
Total area	285.29m ² / 30.71sq
Width	8.83m
Length	22.67m

4 2 2

- Design options available
- Bath to ensuite
 - Butler's pantry
 - Grand living
 - Grand robe to master
 - Master to rear
 - Rear flip



GROUND FLOOR



FIRST FLOOR

Facade options available

Contempo, Lonsdale, Lonsdale hipped, Modern, Vacluse, Vacluse hipped

Saxon

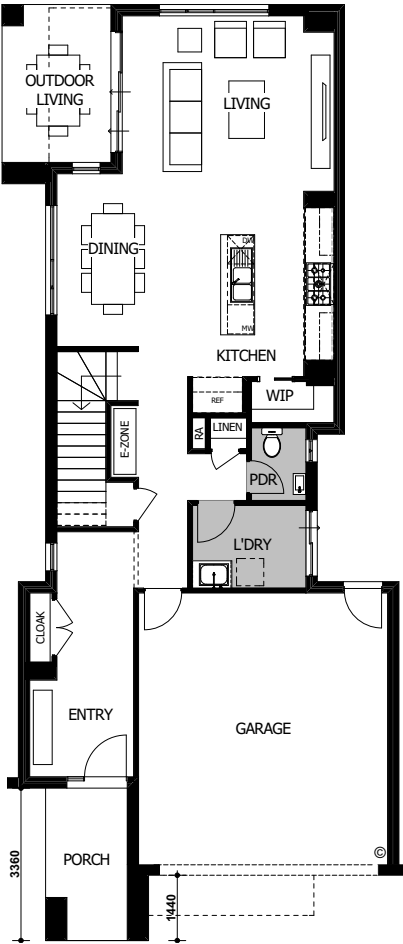


Fits lot width 10m

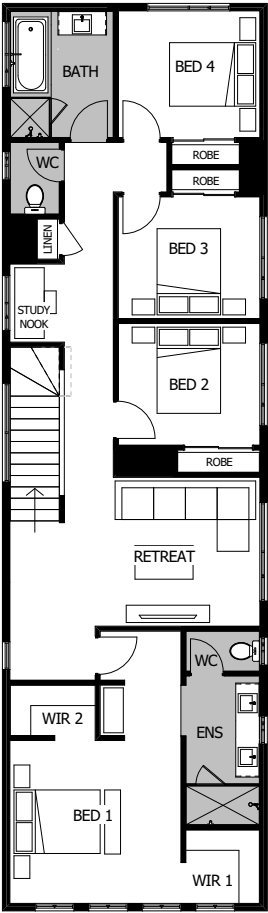
Specifications	
Total area	258.97m ² / 27.88sq
Width	8.83m
Length	20.63m

4 2 2

- Design options available
- Bath to ensuite
 - Grand living
 - Grand robe to master
 - Master to rear
 - Rear flip



GROUND FLOOR



FIRST FLOOR

Facade options available

Contempo, Lonsdale, Lonsdale hipped, Modern, Vacluse, Vacluse hipped