

Riviera

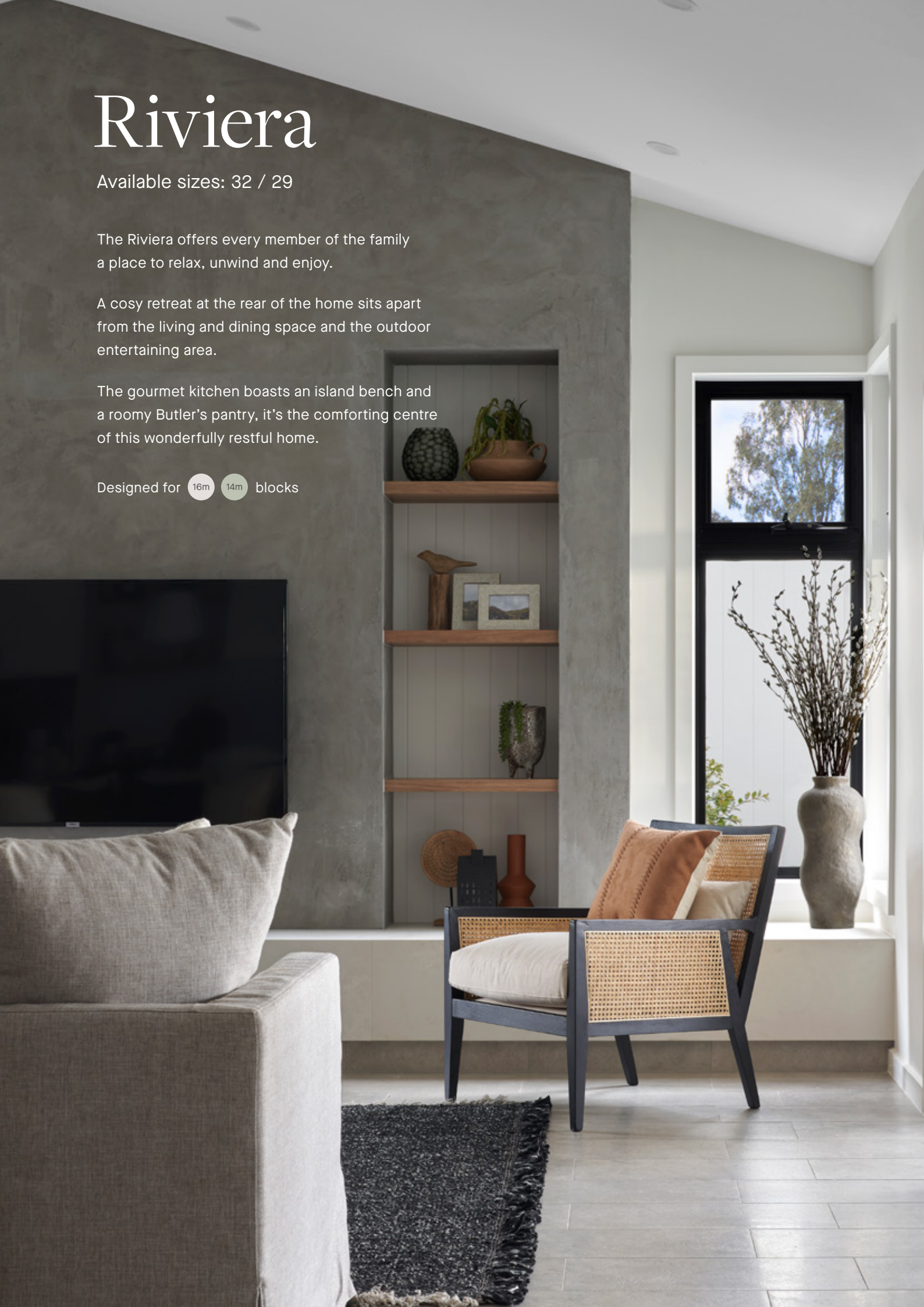
Available sizes: 32 / 29

The Riviera offers every member of the family a place to relax, unwind and enjoy.

A cosy retreat at the rear of the home sits apart from the living and dining space and the outdoor entertaining area.

The gourmet kitchen boasts an island bench and a roomy Butler's pantry, it's the comforting centre of this wonderfully restful home.

Designed for 16m 14m blocks



Riviera 32

On display at

- Coridale
- Ferntree Ridge



Fits lot width 16m

Fits lot length 32m

Specifications

Total area 298.56m² / 32.13sq

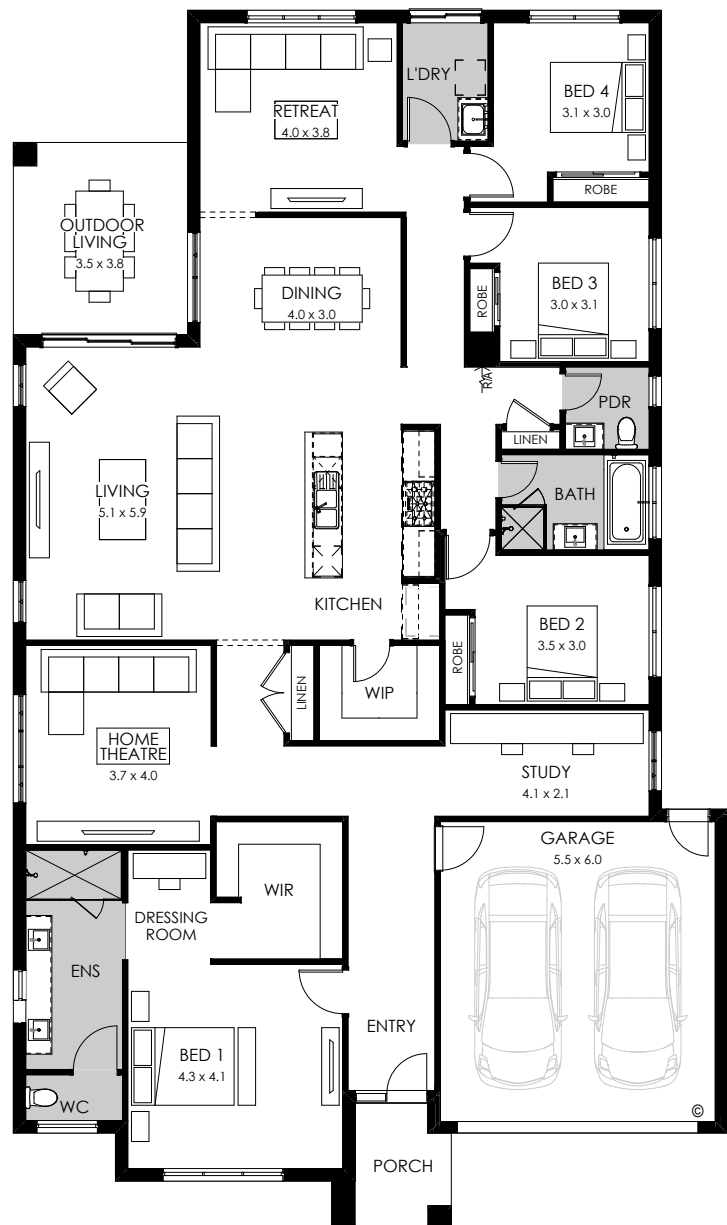
Width 14.27m

Length 24.35m



Design options available

- 5th bedroom
- Alternate kitchen
- Alternate laundry
- Butler's pantry
- Grand outdoor living
- Additional ensuite
- Guest wing
- Bathroom upgrade
- Raked ceiling 17 deg to bed 1 (facade specific)
- Rear flip
- Alternate theatre
- Workshop
- Larger living
- Grand outdoor living



Facade options available

Modern, Metro, Viva, Contempo, Vogue, Luxe, Tribeca, Cape, Gallerie, Coast, Provincial, Southampton, Flinders, Arcadia, Mason, Arlo

Riviera 29



Fits lot width 14m

Fits lot length 32m

Specifications

Total area 266.60m² / 28.69sq

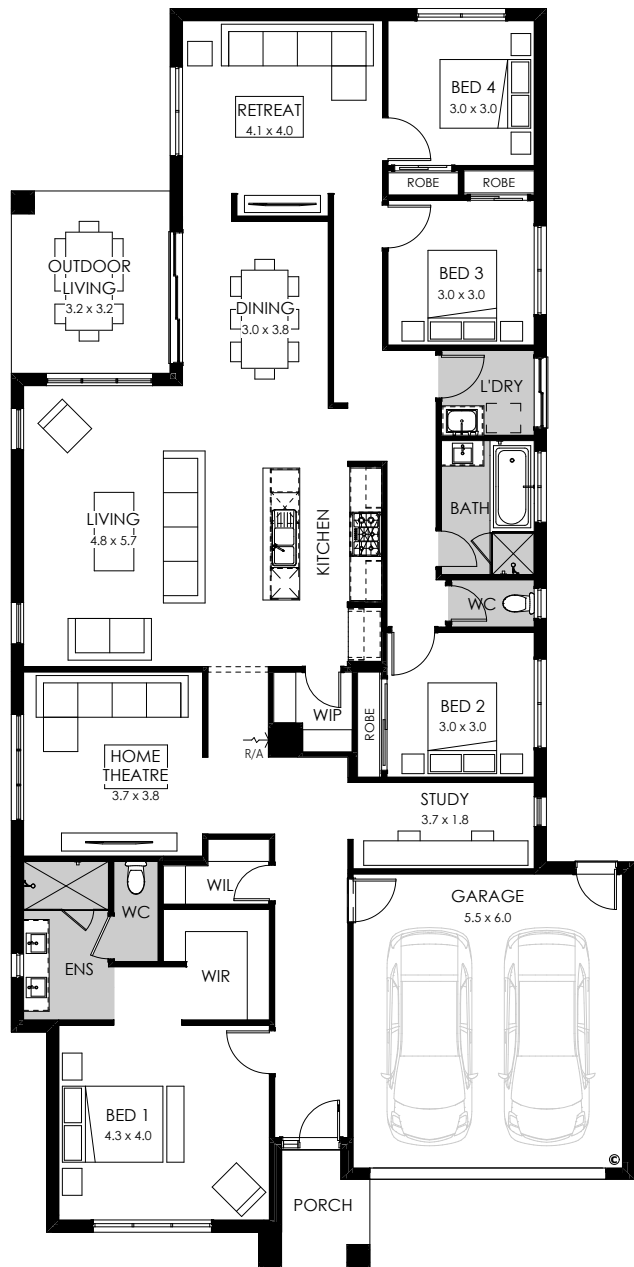
Width 12.71m

Length 25.67m

4 2 2

Design options available

- 5th bedroom
- Bath to ensuite
- Butler's pantry
- Grand laundry
- Guest bedroom
- Powder room
- Rear flip
- Alternate theatre
- Workshop



Facade options available

Modern, Metro, Viva, Contempo, Vogue, Luxe, Tribeca, Cape, Gallerie, Coast, Provincial, Southampton, Flinders, Mason, Arlo

