

# Tribeca

Available sizes: 28 / 25 / 23

Elegantly and intuitively designed, the Tribeca makes every day life easier. Access from the garage to the Butler's pantry allows you to unpack groceries straight from the car. A separate front lounge offers a peaceful oasis, with the central main bedroom featuring a spacious walk-in robe and ensuite.

Designed for 14m 12.5m blocks



# Tribeca 28

Fits lot width 14m

Fits lot length 32m



## Specifications

Total area 262.99m<sup>2</sup> / 28.31sq

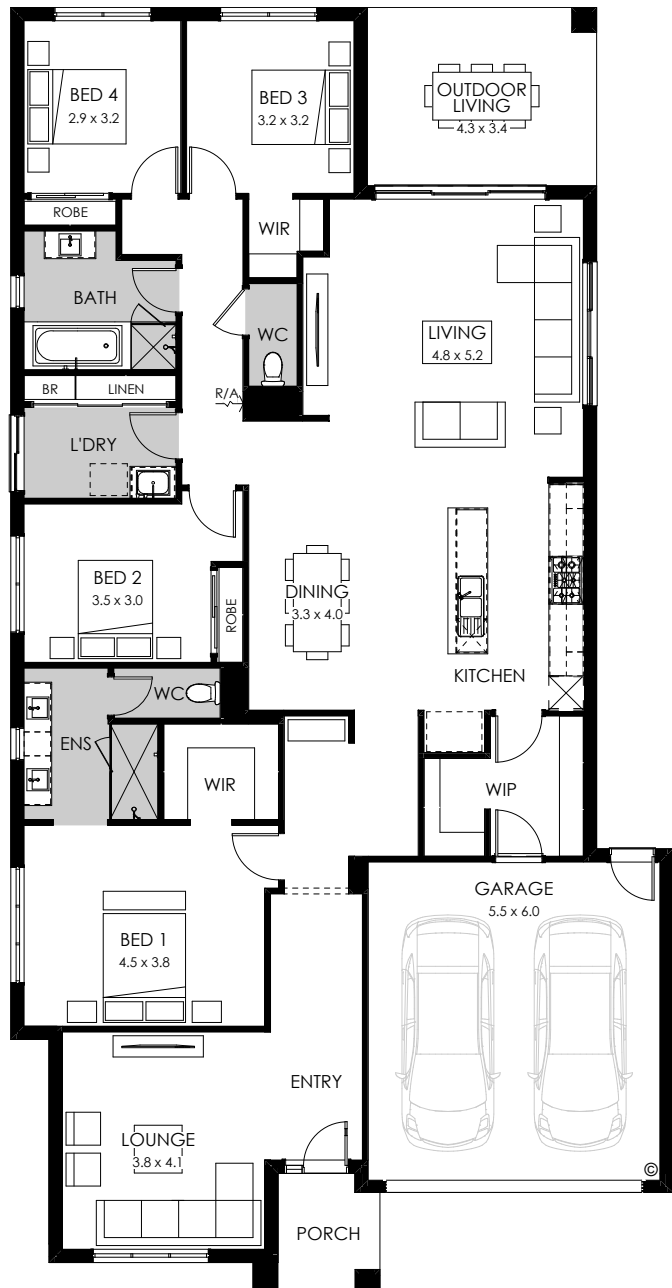
Width 12.47m

Length 24.23m



## Design options available

- 3 bedrooms
- 5th bedroom
- Alternate bed 1
- Alternate ensuite
- Alternate kitchen
- Bath to ensuite
- Butler's pantry
- Guest bedroom
- Powder room
- Rear flip



## Facade options available

Modern, Metro, Viva, Contempo, Luxe, Cape, Vogue

# Tribeca 25

Fits lot width 14m

Fits lot length 28m



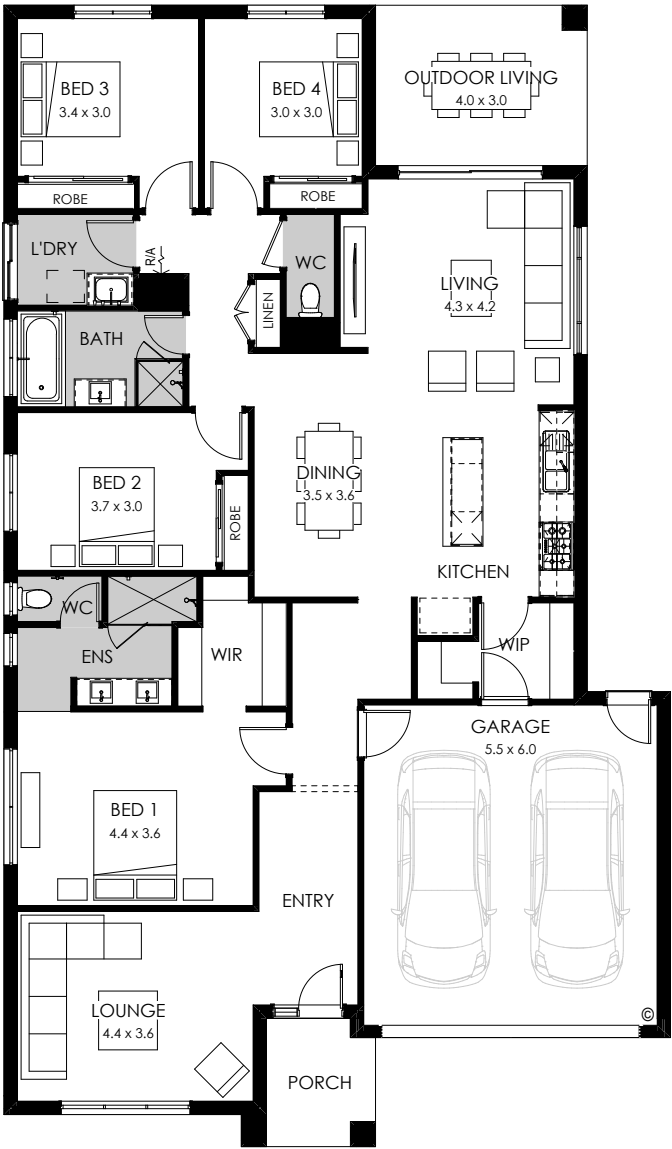
## Specifications

Total area	232.28m <sup>2</sup> / 25sq
Width	12.32m
Length	21.35m

4 2 2

## Design options available

- Alternate bed 1
- Bath to ensuite
- Butler's pantry



## Facade options available

Modern, Metro, Viva, Contempo, Luxe, Cape, Vogue

# Tribeca 23

Fits lot width 12.5m

Fits lot length 28m



## Specifications

Total area 209.14m<sup>2</sup> / 22.55sq

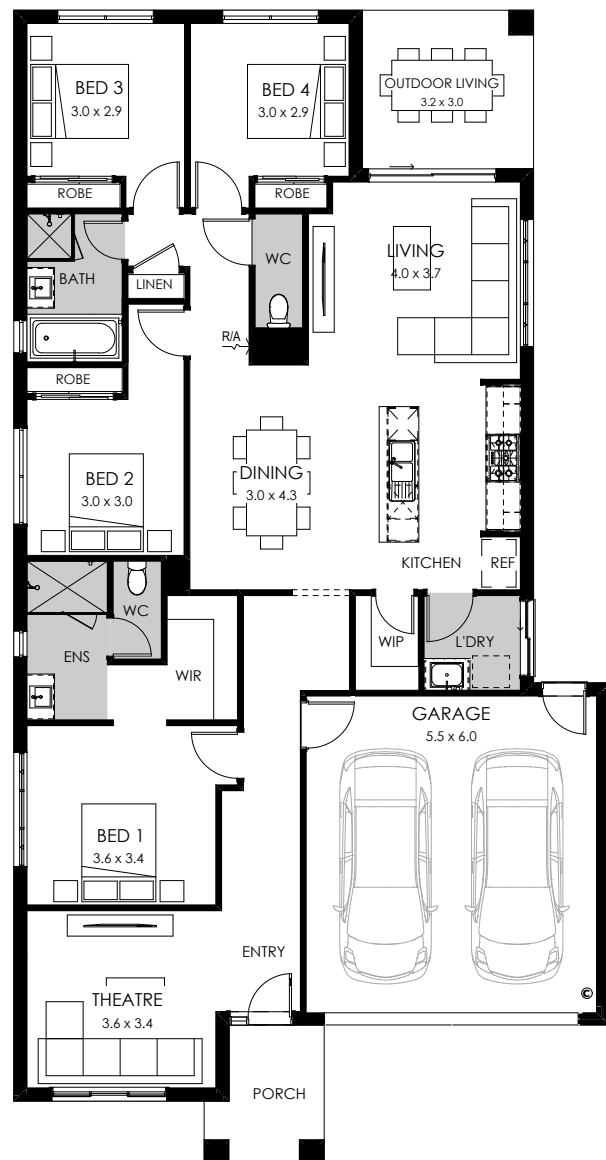
Width 11.27m

Length 21.83m

4 2 2

## Design options available

- 3 bedrooms
- 5th bedroom
- Butler's pantry
- Ensuite upgrade
- Powder room



## Facade options available

Modern, Metro, Viva, Contempo, Luxe, Cape, Vogue