

ON DISPLAY

Riveria 32



Japandi essence.

Inspired by a Japanese-meets-Scandinavian style, the Riviera 32 with distinctive black and warm grey pressed brick Mason façade is a minimal, airy, and balanced family home. Evocative of Japanese style living, the home's interiors offer a calming, minimal, paired back fit-out. A warm neutral palette comprises monochromatic tones of bleached oak and greige, with hints of black and darker timbers to add interest, offering a cohesive connection to the home's exterior palette.

Design features of the home include a mudroom leading off garage through to laundry with ample storage and functional key drop area, kitchen with island bench and a wrap around open shelf design, an e-zone retreat with outdoor access and large-scale windows throughout, enabling light and connection to nature.

On display at 34 Dermody Avenue, Kalkallo

Riveria 32

Mason facade.

Home specifications.

Total area	297.94m2 /32.07sqs
Width	14.7m
Length	24.1m
Fits lot width	16m



Home design specifications.

- Mudroom leading off the garage and through to laundry
- Large Walk in Robe with dressing nook
- Large windows throughout to connect to outdoor
- Ezone to retreat
- Island bench with open shelf design
- Double vanity to ensuite

Home style specifications.

Kitchen

Benchtop	Caesarstone - Fresh Concrete
Overhead cabinetry	Polytec - Quartiera Maple - Woodmatt
Base cabinetry	Polytec - Quartiera Maple - Woodmatt
Splashback	Surfaces by Hynes- 68x280 - Edge - Dark Grey Wave - Matt

Living

Carpet	Carpet Call - Meadow Gait - 21 Albatross
Main floor tiles	Surfaces by Hynes - 600x600 - Terracrete Greige Soft - Lappato
Paint	Dulux - Rottnest Island

Ensuite

Benchtop	Caesarstone - Fresh Concrete
Base cabinetry	Polytec - Quartiera Maple - Woodmatt
Cabinetry door profile	Polytec - Calcutta 35 EMO
Wall tiles	Surfaces by Hynes - Venetian - Gris - 600 x 600mm
Floor tiles	Surfaces by Hynes - Venetian - Gris - 600 x 600mm

Ensuite

Benchtop	Caesarstone - Fresh Concrete
Base cabinetry	Polytec - Quartiera Maple - Woodmatt
Main floor tile	Surfaces by Hynes - 600x600 - Terracrete Greige Soft - Lappato
Main wall tile	Surfaces by Hynes - 300x600 - Terracrete Greige Soft - Lappato

Living

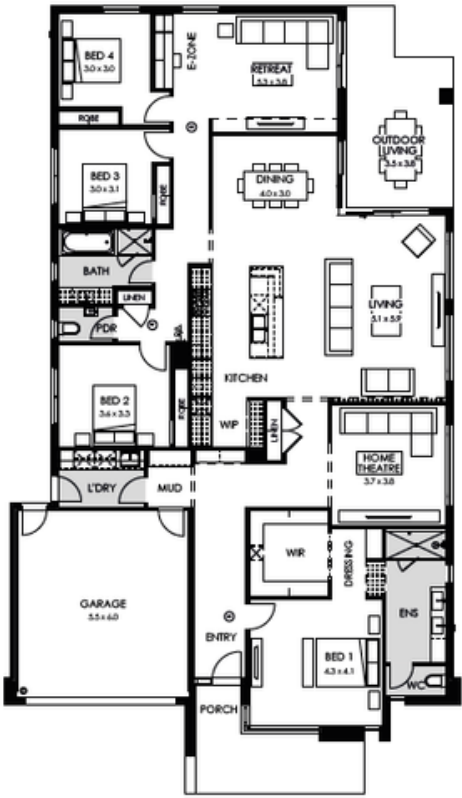
Benchtop	Caesarstone - Fresh Concrete
Base cabinetry	Polytec - Onyx Figured-Wood - Smooth
Main floor tile	Surfaces by Hynes - 600x600 - Terracrete Greige Soft - Lappato

Main wall file

Surfaces by Hynes - 600x600 - Terracrete Greige Soft - Lappato
--

Exterior

Main Facade Render	Dulux - Black
Cladding	Dulux - Black



Scan the code to learn more about the Riveria 32.



Disclaimer ©2025, all plans are protected by copyright and are owned by ABN Group (VIC) Pty Ltd. Plans are based on a modern facade. Images used in this brochure are for illustrative purposes only and may depict fixtures, finishes, features, furnishings and landscaping not included in standard pricing or supplied by Boutique Homes including, but not limited to, flooring, overhead cabinetry, 900mm wide appliances, 2550mm high ceilings, planter boxes and fences. For more information on the pricing and specification of these homes please contact one of our New Homes Consultants. Boutique Homes may at its direction determine how long it wants to offer the products and pricing set out in this brochure. Boutique Homes is entitled to vary all its products and pricing at its discretion at any time. See boutiquehomes.com.au for further details. All information contained within this brochure was accurate at time of printing on May 2025.

APPLY
STICKER
HERE