

# Your Dream Home with 7%\* Guaranteed Return.



The Riviera offers every member of the family a place to relax, unwind and enjoy.

Positioned at the front of the home, the master bedroom suite features a walk-in robe, dressing area and generous ensuite with twin vanity and oversized shower. The three minor bedrooms run down the side of the home, carefully spaced out with the bathroom, powder room and laundry for maximum privacy.

## Riviera 32 Mason facade

Cloverton

Available from	\$1099,900
Annual earnings	\$76,993*

\*Terms & Conditions apply. Annual earnings based only on a leaseback of 7% and does not factor in any mortgage repayments, interest rates, insurance, rates and service charges or body corporate fees. Earnings figure based on 7% of advertised purchase price from \$1,099,900 for Boutique Homes Riviera 32 in Cloverton Victoria. Image used is for illustrative purposes only and may show decorative items not included in the purchase. Block and building dimensions may vary from the illustration and the details shown. For more information on the pricing and specification of this home please contact a New Homes Consultant. The building practitioner is ABN Group (Vic) Pty Ltd trading as Boutique Homes, registration number CDB-U 49215. ABN Group Victoria has permission of the owner of the land to advertise the land as part of the price specified. Correct as of 12/03/2025.

# Riviera 32

## Mason facade.

### Address

34 Dermody Avenue, Kalkallo

### Specifications

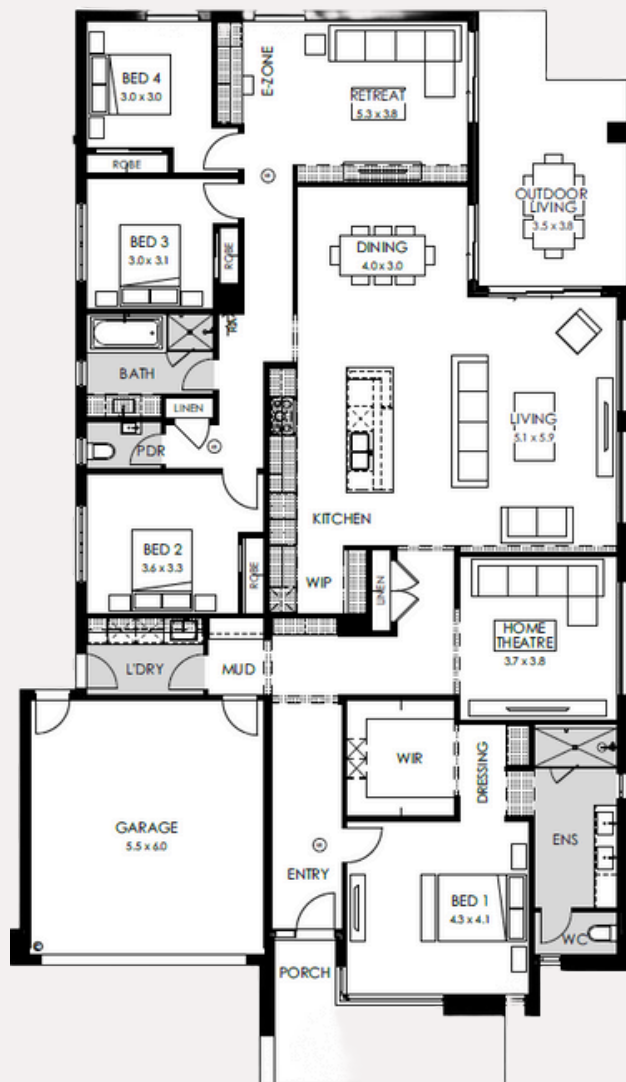
Home area: 298.15m<sup>2</sup>

Land area: 512m<sup>2</sup>

The Riviera 32 features a huge range of luxury upgrades and inclusions:

- Mason facade
- Large windows throughout to connect to outdoor
- Mud room to laundry
- Double vanity to ensuite

4 2 2



Discover the difference  
BoutiqueHomes.com.au  
or call 9674 4500

**boutique**  
homes

**resolve.**  
finance

\*Terms & Conditions apply. Annual earnings based only on a leaseback of 7% and does not factor in any mortgage repayments, interest rates, insurance, rates and service charges or body corporate fees. Earnings figure based on 7% of advertised purchase price from \$1,099,900 for Boutique Homes Riviera 32 in Cloverton Victoria. Image used is for illustrative purposes only and may show decorative items not included in the purchase. Block and building dimensions may vary from the illustration and the details shown. For more information on the pricing and specification of this home please contact a New Homes Consultant. The building practitioner is ABN Group (Vic) Pty Ltd trading as Boutique Homes, registration number CDB-U 49215. ABN Group Victoria has permission of the owner of the land to advertise the land as part of the price specified. Correct as of 12/03/2025.