

QUALITY DISPLAY HOMES FOR SALE

Your Dream Home with 8%* Guaranteed Return.



An architectural home with connection to outdoors

The Portofino home design offers a unique point of difference, with the inclusion of a side courtyard, creating an instant indoor-outdoor experience and style of living in a family home. The home's living, dining, kitchen and multipurpose room were the obvious choices to unfold easily around the courtyard, with access to outdoor space and natural light, creating interesting and unique lines of sight, where the multipurpose room looks through the courtyard into the living room, connecting through to the rear yard.

Portofino 31 Alpine facade

| | |
|-----------------|-------------|
| Woodlea | |
| Available from | \$1,424,900 |
| Annual earnings | \$113,992* |

*Terms & Conditions apply. Annual earnings based only on a leaseback of 8% and does not factor in any mortgage repayments, interest rates, insurance, rates and service charges or body corporate fees. Earnings figure based on 8% of advertised purchase price from \$1,424,900 for Boutique Homes Portofino 31 in Aintree, Victoria. Image used is for illustrative purposes only and may show decorative items not included in the purchase. Block and building dimensions may vary from the illustration and the details shown. For more information on the pricing and specification of this home please contact a New Homes Consultant. The building practitioner is ABN Group (Vic) Pty Ltd trading as Boutique Homes, registration number CDB-U 49215. ABN Group Victoria has permission of the owner of the land to advertise the land as part of the price specified. Correct as of 11/04/2025.

Portofino 31

Alpine facade.

Address

16 Cotes Loop, Aintree

Specifications

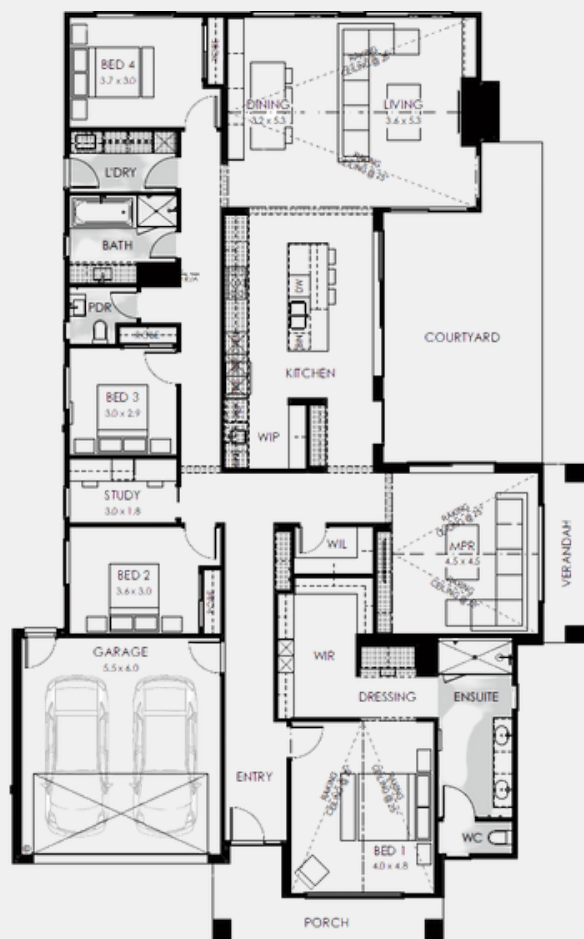
Home area: 294.94m²

Land area: 664m²

4 2 2

The Portofino 31 features a huge range of luxury upgrades and inclusions:

- New Alpine facade
- Butler's Pantry
- Upgraded cabinetry to kitchen
- Featuring a concrete look on living room wall
- 3 stack fridge/freezer
- Separate study
- Generous Walk in Robe leading to large ensuite
- Long dining table bench joinery
- Vasari splashback, benchtop and plinths



Discover the difference
BoutiqueHomes.com.au
or call 9674 4500

boutique
homes

resolve.
finance

*Terms & Conditions apply. Annual earnings based only on a leaseback of 8% and does not factor in any mortgage repayments, interest rates, insurance, rates and service charges or body corporate fees. Earnings figure based on 8% of advertised purchase price from \$1,424,900 for Boutique Homes Portofino 31 in Aintree, Victoria. Image used is for illustrative purposes only and may show decorative items not included in the purchase. Block and building dimensions may vary from the illustration and the details shown. For more information on the pricing and specification of this home please contact a New Homes Consultant. The building practitioner is ABN Group (Vic) Pty Ltd trading as Boutique Homes, registration number CDB-U 49215. ABN Group Victoria has permission of the owner of the land to advertise the land as part of the price specified. Correct as of 11/04/2025.